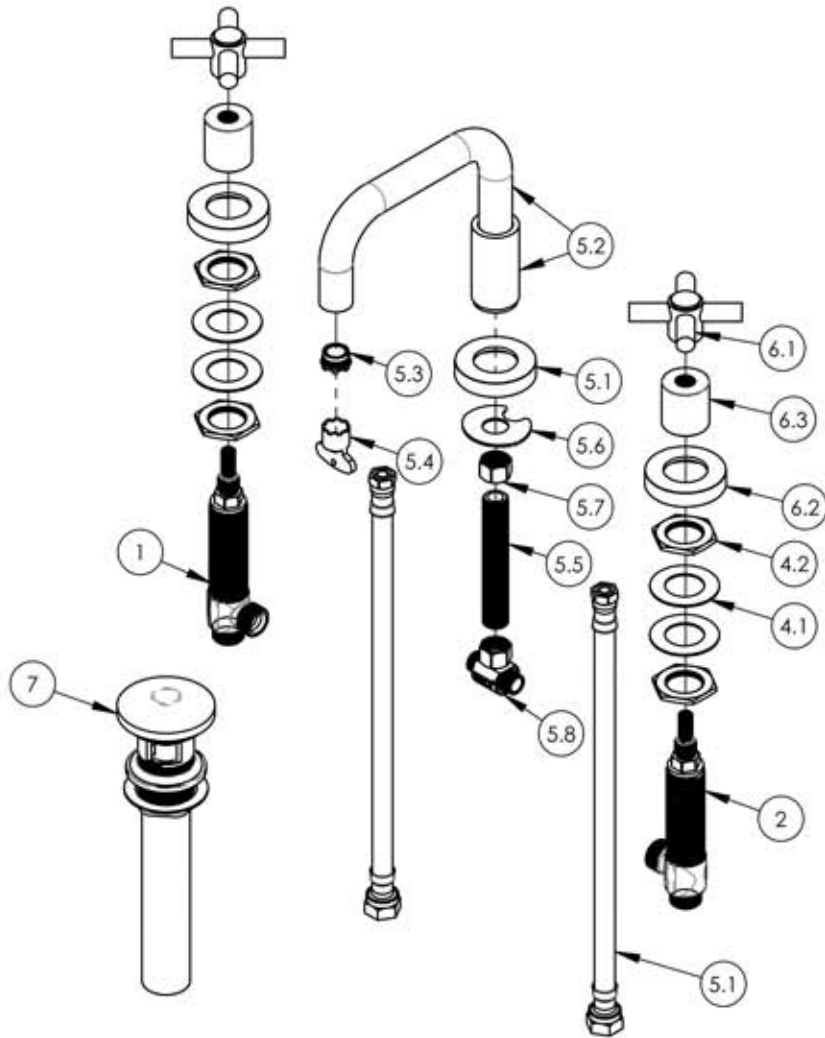


A

B

C

D



ITEM NO.	PART NUMBER	DESCRIPTION	QTY.
1	1-149	WIDESPREAD VALVE LAV 16PT. HOT, ONLY	1
2	1-150	WIDESPREAD VALVE LAV 16PT. COLD, ONLY	1
5.1	10982	HOSE, 3/8" COMP. X 1/2" NPSM - 12'L	2
4	2-203	MOUNTING NUT KIT, WIDESPREAD LAV	2
4.1	92252	WASHER, 1-1/32" ID 1-13/16" OD	2
4.2	92251	HEX NUT, 1"-20 THREAD	2
5	3-181/00	WIDESPREAD FAUCET FLAT SPOUT, BASIC	1
5.1	P02035_2/00	ESCUTCHEON, CONTEMPORARY	1
5.2	2-166	SUB ASSY. FLAT SPOUT, BASIC	1
5.3	11428	AERATOR CACHE TINY JUNIOR 1.2GPM 43.2260.450 PINK	1
5.4	P05022	AERATOR, BASIC KEY, PLASTIC GREEN	1
5.5	10745	THREAD ALL, 3/8"-18 NPSL - 3/8"NPT	1
5.6	92174	WASHER MOUNT WIDESPREAD (3/8")	1
5.7	10746	NUT, 3/8"-18 NPSL	1
5.8	1-112	TEE VALVE, 3/8" NPSM X 3/8" COMPRESSION	1
6	3-442/00	ASSY. TUBULAR CROSS HANDLE, BASIC	2
6.1	3-439/00	ASSY. CROSS HANDLE TUBULAR, BASIC SERIES	1
6.2	P02035_2/00	ESCUTCHEON, CONTEMPORARY	1
6.3	P02035_1	HUB ESCUTCHEON, CONTEMPORARY TOP	1
7	3-517/00	PUSH TO CLOSE DRAIN	1

E

ALL	C	REMOVE POP UP COMPONENTS, ADD PUSH DOWN DRAIN, UPDATE VALVES	4/25/2019	AMM
ZONE	REV.	DESCRIPTION	DATE	
REVISIONS				

1261 LOGAN AVENUE COSTA MESA, CALIFORNIA 92626 PHONE: 714.361.4800 FAX: 714.617.3120	<h1>PHYLORICH®</h1> <p>Defining Luxury Since 1959</p>	PROPRIETARY AND CONFIDENTIAL THE INFORMATION CONTAINED IN THIS DRAWING IS THE SOLE PROPERTY OF RJS MANUFACTURING. ANY REPRODUCTION IN PART OR AS A WHOLE WITHOUT THE WRITTEN PERMISSION OF RJS MANUFACTURING IS PROHIBITED.

-	-	INTERPRET GEOMETRIC DIMENSIONING & TOLERANCING IN ACCORDANCE WITH ASME Y14.5-2009 & ASME Y14.41-2003 STANDARDS. UNLESS OTHERWISE SPECIFIED, DIMENSIONS ARE IN INCHES. TOLERANCES ARE: FRACTIONS ±1/64" DECIMALS X.X: ±.1 ANGULAR ±.5° X.XX: ±.01 X.XXX: ±.005
NEXT ASSY	USED ON	
APPLICATION		
MATERIAL		
FINISH	DRAWN	10/12/2015
DO NOT SCALE DRAWING	CHECKED	GRE

WIDESPREAD FAUCET, TUBULAR CROSS HANDLES, FLAT SPOUT, BASIC SERIES.		
SIZE	ASM/PRT NO.	REV
A	D136/00	C
SCALE: 1:5	WEIGHT: lbs.	SHEET 1 OF 2

5

4

3

2

1